

Crippen's Santa Clarita Valley- FD 1952  
 Burial & Cremation Service  
 16653 Sierra Highway. \* Canyon Country, Ca. 91351  
 (661) 250-1435 \* (661) 250-1557 Fax

Crippen Mortuary - FD 402  
 2900 Honolulu Avenue  
 La Crescenta, Ca. 91214  
 (818) 249-6131 \* (818) 249-6957 Fax

***Crippen Chapel - Burial Package***  
**Mortuary Chapel Service \*\*\*Visitation 1 hour prior to Chapel Service\*\*\***

PACKAGE PRICE AVAILABLE TO FAMILIES WHO SELECT A CASKET FROM OUR MORTUARY

• Funeral Director and Staff Basic Fee	\$ 1795.00
• Local Transfer of Remains to Funeral Home (30 Mile Radius)	\$ 495.00
• Embalming	\$ 595.00
• Dressing, Cosmetics, Casketing	\$ 375.00
• Use of Facilities and Staff for Visitation & Mortuary Chapel Service	\$ 395.00
• Additional Transportation, delivery to Cemetery Los Angeles County	\$ 295.00
• <b>Sentry 20 Gauge Caskets (Colors: Pink, Blue, White, Silver, Bronze) or</b> • <b>Norfolk Carte Veneer Light Pine Finish</b>	<b>\$ 1300.00</b>
• "The Regal Line" Register Book	\$ 0.00
• Memorial Cards or Folders (50 cards)	\$ 95.00
• <b>Subtotal</b>	<b>\$ 5345.00</b>
<b>No Hidden Fees</b>	
• <b>Total Crippen Discount Package</b>	<b>\$ 3700.00</b>

**Your Savings on Burial Package is \$ 1645.00**

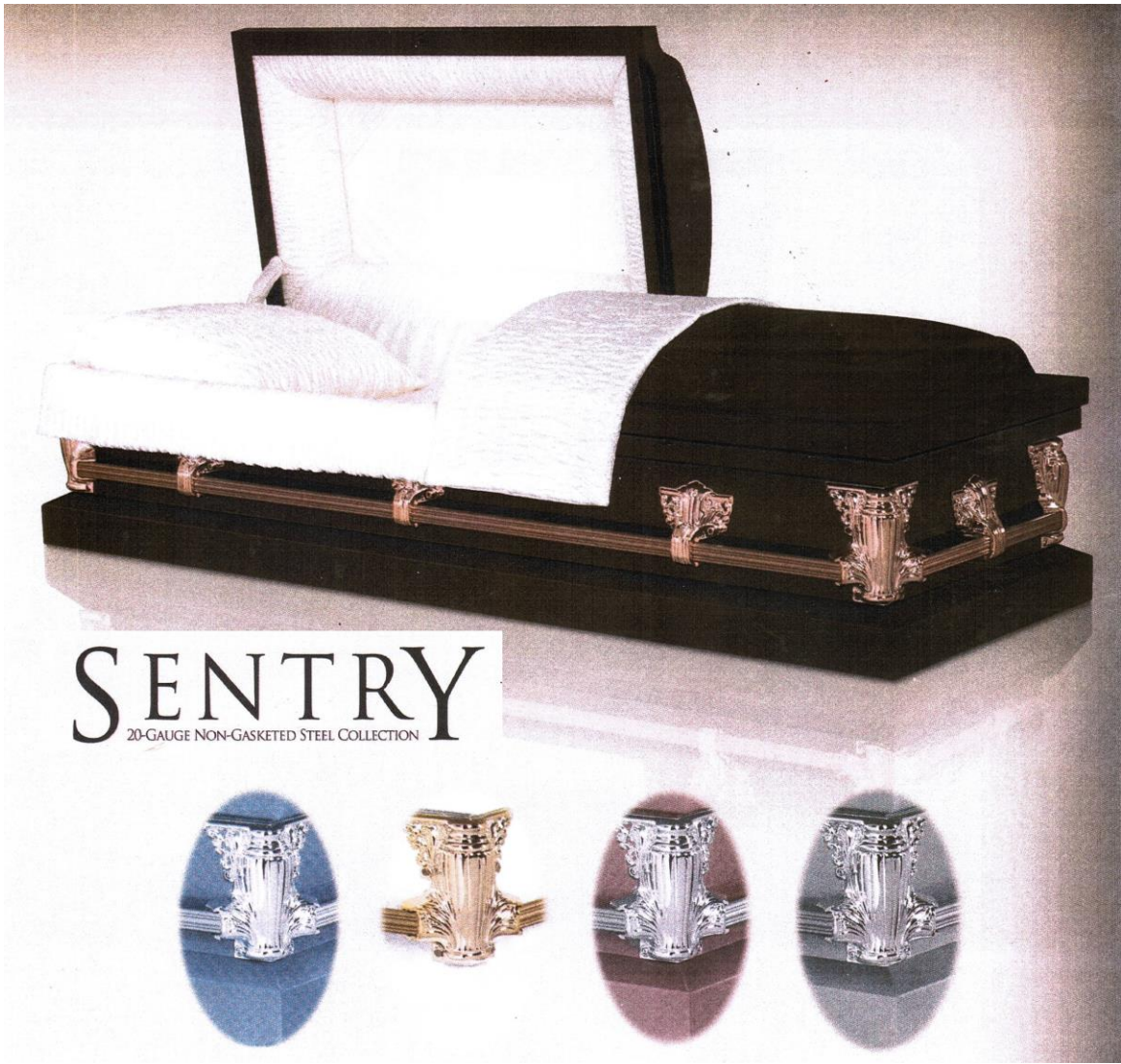
**[See Reverse Side for Casket Options & Pictures](#)**

**This Package Does Not Include The Following:**

- **(\$295.00) Saturday, Sunday Or Holiday Services**
- **(\$48.50) Premium Memorial Register Book**
- **Memorial DVD (\$125.00 Includes 35 Pictures)**
- **(\$655.00 min.) Burial Vault (may be required by the cemetery)**
- **(\$495.00) Church Service Away From Our Chapel**
- **(\$200.00 suggested min.) Minister/Officiate**
- **(\$175.00 suggested min.) Organist**
- **(\$175.00 each) Motorcycle Escorts For Funeral Procession**
- **(\$21.00 each) Certified Copies Of The Death Certificate**
- **(\$12.00) Disposition Permit**
- **Newspaper Obituary Charges**
- **Any Cemetery Charges**
- **Flowers (Casket Spray starting at \$250.00)**
- **Sales Tax Not Included**

**Ask how you can lock in this *low* fee, before prices increase.**

*(Prices subject to change without notice)*



# SENTRY

20-GAUGE NON-GASKETED STEEL COLLECTION



## NORFOLK

Carte Veneer  
Light Pine Finish  
White Crepe Interior  
71064593

Every effort has been made to accurately represent the casket on this lithograph. Actual product may vary slightly in finish and design.

**Matthews**  
INTERNATIONAL  
CASKET DIVISION